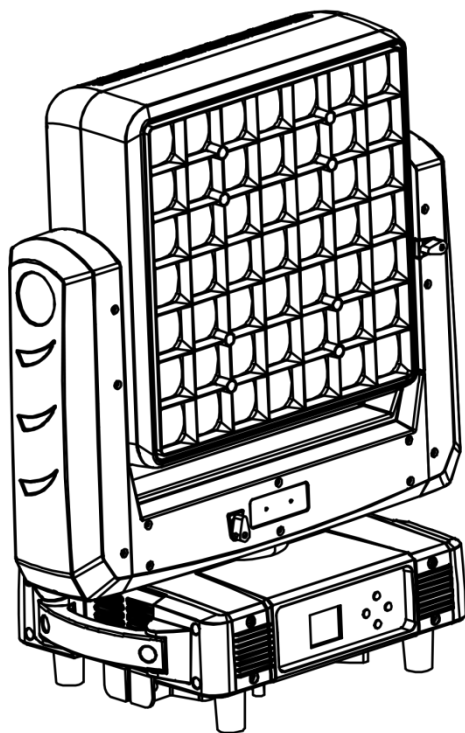


4920Z

49×20W Matrix Zoom Wash



USER MANUAL

Please read manual carefully before use

CONTENTS

1. Safety Instructions	3
2. Technical Specification	5
3. DMX Set Up	6
4. Display	7
5. Menu	8
6. LUX Data	11
7. DMX Channel List	12
8. Mounting	25
9. Product Size	27
10. Attention	28
11. Trouble Shooting	28
A. The unit does not work, no light and the fan does not work	28
B. No response to DMX controller	28
C. One of the channels is not working well	29
12. Fixture Cleaning	29

Thank you for choosing our LED lights. Each facility has been rigorously tested. Please check whether the facility has been damaged during transportation. If you find any parts are missing or broken, please contact the manufacturer immediately. Please do not return the product without any notice!

1.Safety Instructions



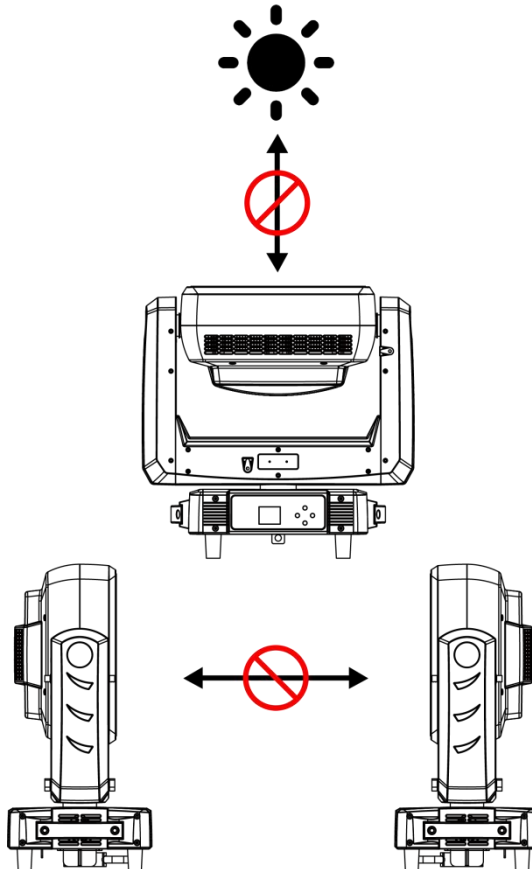
Please read this manual carefully, which includes important information on installation, use and maintenance.

Attention

- Please keep this USER MANUAL for future consultation. If you sell the facility to another user, be sure that they also receive this USER MANUAL.
- Please open and check in details and make sure there is no transportation damage.
- Before operating, ensure that the voltage and frequency of power supply match the power requirements of the facility.
- It's important to ground the yellow/green conductor to earth in order to avoid electric shock.
- The facility must be installed in a location with adequate ventilation, at least 50 cm from adjacent surfaces. Be sure that no ventilation slots are blocked.
- Make sure the power is disconnected before removing the facility.
- Make sure there are no flammable materials close to the unit while operating as it is fire hazard.
- Use safety cable when fixes this facility. Do not handle the facility by taking its head only, but always by taking its base.
- Maximum ambient temperature is 40 °C . Do not operate it where the temperature is higher than this.
- Please stop using the facility for serious operating problems. Stop using the facility immediately. Never try to repair the facility by yourself, but be a professional technician. Please contact the supplier's service department

for technical support.

- Do not touch any wire during operation as high voltage might be causing electric shock.
- When the housing or lens is damaged, it must be replaced.
- Direct sunlight or any other strong light source penetrating the lens of the light will cause serious internal damage to the facility. During unpacking, installation, use and long-term outdoor idleness, it is forbidden to expose the lens of the facility to direct sunlight or any other strong light source at any angle. It is forbidden to aim the beam of one light directly at another light.



Caution

There are no accessories available, do not open the housing and try to repair the facilities yourself. Please contact our company for after service.

Installation

The unit should be mounted via its screw holes on the bracket. Always ensure that the unit is firmly fixed to avoid vibration and slipping while operating. And make sure that the structure to which you are attaching the unit is secure and is able to support a weight of 10 times of the unit's weight. Also always use a safety cable that can hold 12 times of the weight of the unit when installing the fixture.

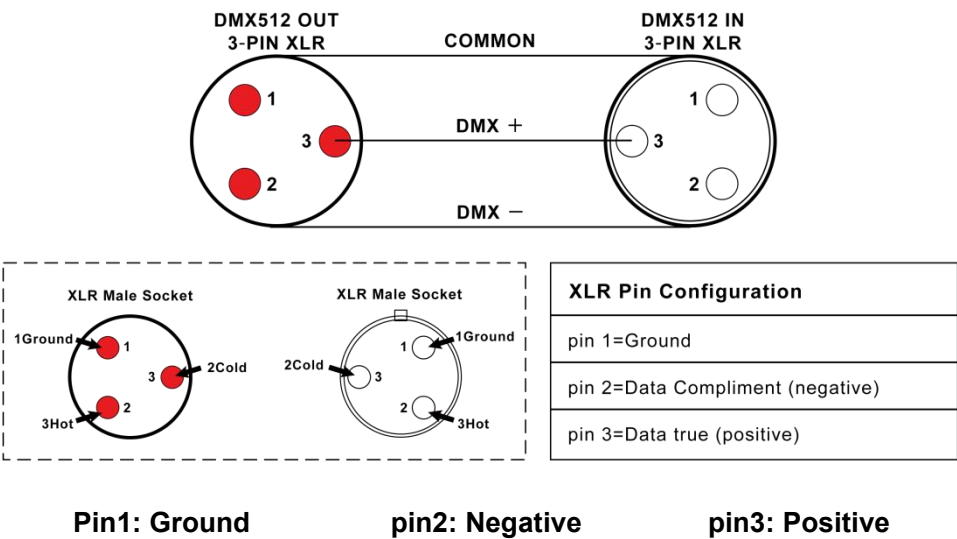
The facility must be installed by professionals, and keep it far away from fire, walking road, and easy touched place.

2. Technical Specification

Light Source	49 x 20W 4in1 RGBW LED
LED Lifetime	≥ 50000H
Power Voltage	AC100-240V , 50-60Hz
Power Consumption	760W ± 5W
Beam Angle	4°~46°
Control Modes	DMX512/ Auto/ Sound/ Master/ Manual/ RDM/ ArtNet (optional)
DMX Channel	22/ 25/ 33/ 229/ 206 Channel
Protection Rating	IP20
Display	1.8° TFT Color Display
Data In/Out Socket	3-pin & 5-pin XLR sockets
Power Socket	Power-Con in/ out
Housing Material	ABS High temperature resistant plastics

Pan	540°,Accuracy 2.11 ° /step, fine-tuning accuracy: 0.008°
Tilt	270°,Accuracy 0.86 ° /step, fine-tuning accuracy: 0.0034°
photoelectric reset system	Tilt infinite rotation; photoelectric reset system
Pan/Tilt Resolution	Automatically correct pan/tilt position
MAX. Connection	4 units (240V, 50Hz) 2.5mm ² power cable
	2 units (100V, 60Hz) 2.5mm ² power cable
Dimension	477mmx272mmx579.5mm
Net Weight	23.35kg
Carton Package	590mm*590mm*445mm 1in1 GW: 27.2kg
Flight Case	740mm*540mm*775mm 2in1 GW: 80.3kg
Features	Full light range dimming, 65536-level dimming accuracy. Fast strobe 1-25Hz.LED single control, Preset multiple color macro; Preset multiple effect macro
Configuration	Signal cable 1pc
	Power cable 1pc
	Manual 1pc

3. DMX Set Up



DMX Connection

To ensure optimal transmission of DMX data, please connect facilities in the shortest way. The connection order won't affect the DMX address code. For example, if the address code is set to 1, no matter where the facility is connected, its address code will not change. This is determined by the principle of the DMX controller.

Operation method

You can operate in the following three modes:

- Auto mode - the light can automatically complete all color changes
- DMX control mode - each light can be individually controlled by a standard DMX512 console
- Master mode - any light can work as a host in any of the above modes, and the other lights will work synchronously as slaves

4. Display

There are four buttons on the LED panel: MENU, UP, DOWN, and ENTER.



MENU



UP



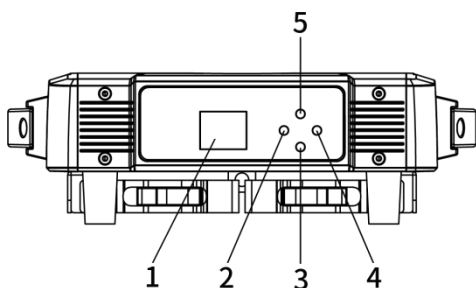
DOWN



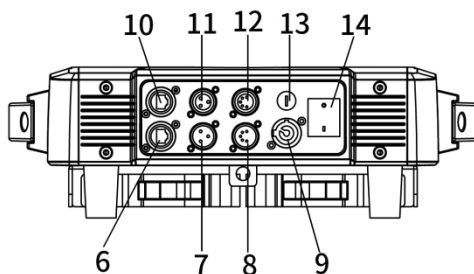
ENTER

Please press the "MENU" to exit or return to the previous menu, press "UP" or "DOWN" to select the upper and lower menus or adjust the values, and press "ENTER" to confirm.

FRONT VIEW



REAR VIEW



After powering on, the facility will automatically return to the last operation when it was powered off, then get into standby status. For more details, please refer to the information below↓

5. Menu

1-MENU 2-UP 3-DOWN 4-ENTER			
Menu	1.Pan Degree	1.540 2.360	Pan running angle selection
	2.Mic Sense	001-100	Sound sensitivity
	3.Language	1.English	Select Display Language
		2.Chinese	
	4.No Signal	1.BlackOut 2.Hold	
	5.Fan Set	1.Auto 2.Low 3.High	Setting fan speed
	6.ArtNet Set	1.ArtNet Enable:(1).ON (2).OFF	
		2.Universe:0-255	
		3. IP Mode: A.2.X.X.X Auto B.10.X.X.X Auto C.Custom	
		4.Custom IP: 192.168.000.001	
		5.SubNet Mask:	

		255.000.000.000	
	7.Reset	1.Yes	Reset
		2.No	
	8.Default	1.Yes	Factory setting
		2.No	
	9.Adjust	Pass Word: ****	Change the value of Pan/Tilt/Focus/Rota to correct the angle; change the value of R/G/B/W to adjust the white balance.
		1.Pan: 0-255	
		2.Tilt: 0-255	
		3.Focus: 0-255	
		4.Rota: 0-255	
		4.Red: 0-255	
		5.Green: 0-255	
		6.Blue: 0-255	
		7.White: 0-255	
Address	001-512		Setting the address from 001-512
Rever	1.Pan Invert	1.YES 2.NO	Pan clockwise and counterclockwise setting
	2.Tilt Invert	1.YES 2.NO	Tilt clockwise and counterclockwise setting
	3.Display Invert	1.YES 2.NO	Display counterclockwise setting
Informati on	1.CH Value		Shown all channel information
	2.Tem**°C		Show the temperature of LED board
	3.Soft V1.1		Program version number
	4.IP	002.016.035.052	Default IP
	5.Mask	255.000.000.000	Default subnet mask
Mode	1.DMX512		Setting control

	2.Auto	1.Master	mode
		2.Alone	
	3.Sound	1.Master	
		2.Alone	
	4.Manual	1.Pan: 0-255	Manual control
		2.Pan Rotation: 0-255	
		3.Tilt: 0-255	
		4.Tilt Rotation: 0-255	
		5.Focus: 0-255	
		6.Red1: 0-255	
		7.green1: 0-255	
		8.Blue1: 0-255	
		9.White1: 0-255	
		10.Strobe1: 0-255	
		11.Red2: 0-255	
		12.green2: 0-255	
		13.Blue2: 0-255	
		14.White2: 0-255	
		15.Strobe2: 0-255	
	5.Master/ Alone	1.Master	Master/ Alone
		2.Alone	
Channel	1.22 CH	1.22 Channels	Select channel mode
	2.25 CH	2.25 Channels	
	3.33 CH	3.33 Channels	
	4.229 CH	4.229 Channels	
	5.206 CH	5.206 Channels	

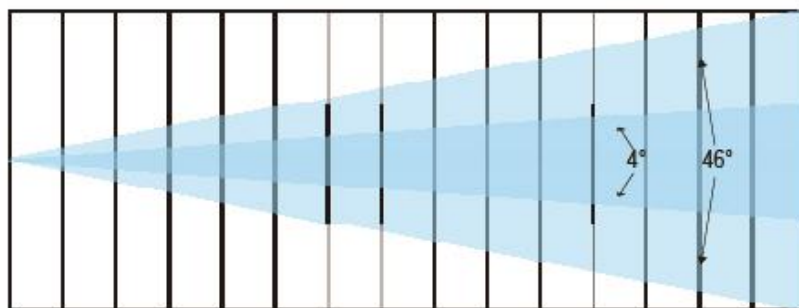
6. LUX Data

Beam Angle = 4°

R lux	13000	9010	6360	2680
G lux	32400	19100	14000	5870
B lux	4690	3910	2750	1160
W lux	32900	24800	18200	7550
4in1 lux	81600	54400	38800	16400

Beam Angle = 46°

R lux	7220	873	350	143
G lux	16100	2060	802	320
B lux	3270	419	162	64.1
W lux	20300	2570	1010	406
4in1 lux	44100	5560	2210	888



Distance (m)	1	3	5	8
Spot diameter (m) 4°	0.48	0.69	0.90	1.35
Spot diameter (m) 46°	0.85	2.52	3.66	None

7. DMX Channel List

► 22CH Mode

CH	Function	DMX Value	Description
1	R	0-255	Red dimming
2	Red adjust	0-255	Red adjust
3	G	0-255	Green dimming
4	Green adjust	0-255	Green adjust
5	B	0-255	Blue dimming
6	Blue adjust	0-255	Blue adjust
7	W	0-255	White dimming
8	White adjust	0-255	White adjust
9	Linear color temperature	0-4	No function
		5-255	Color temperature from warm to cold
10	Macro color	0-9	No function
		10-19	Macro color 1
		20-29	Macro color 2
	 (10 numbers 1 macro color)
		240-249	Macro color 24
		250-255	Macro color 25
11	Dimmer	0-255	From dark to bright

CH	Function	DMX Value	Description
12	Dimmer adjust	0-255	Dimmer adjustment
13	Strobe	0-3	Strobe dimming
		4-203	Synchronous strobe speed from slow to fast (1Hz-25Hz)
		204-255	Random strobe
14	Pan	0-255	Pan adjustment
15	Pan adjustment	0-255	Pan fine adjustment
16	Tilt	0-255	Tilt adjustment
17	Tilt adjustment	0-255	Tilt fine adjustment
18	Pan/Tilt speed	0-255	From fast to slow
19	Tilt infinite rotation control	0-55	No Function
		56-155	Infinite rotation clockwise from slow to fast
		156-255	Infinite rotation counterclockwise from slow to fast
20	Zoom	0-255	From narrow to wide
21	Dimming Mode	0-49	Mode -1
		50-99	Mode -2
		100-149	Mode -3
		150-255	Mode -4
22	Reset	0-250	No function

CH	Function	DMX Value	Description
		251-255	Reset within 5s

► 25CH Mode

CH	Function	DMX Value	Description
1	Pan	0-255	Pan adjustment
2	Pan adjustment	0-255	Pan fine adjustment
3	Tilt	0-255	Tilt adjustment
4	Tilt adjustment	0-255	Tilt fine adjustment
5	Pan/Tilt speed	0-255	From fast to slow
6	Tilt infinite control	0-55	No function
		56-155	Infinite rotation clockwise from slow to fast
		156-255	Infinite rotation counterclockwise from slow to fast
7	Zoom	0-255	From narrow to wide
8	Dimmer	0-255	From dark to bright
9	Strobe	0-3	Strobe dimming
		4-203	Synchronous strobe speed from slow to fast (1Hz-25Hz)
		204-255	Random strobe
10	R dimmer	0-255	From dark to bright
11	G dimmer	0-255	From dark to bright

CH	Function	DMX Value	Description
12	B dimmer	0-255	From dark to bright
13	W dimmer	0-255	From dark to bright
14	Linear color temperature	0-4	No function
		5-255	Color temperature from warm to cold
15	Macro color	0-9	No function
		10-19	Macro color 1
		20-29	Macro color 2
	(10 numbers 1 macro color)
		240-249	Macro color 24
		250-255	Macro color 25
16	Static pattern	0-2	No function
		3-5	Pattern 1
		6-9	Pattern 2
	(3 numbers 1 pattern)
		174-176	Pattern 59
		177-255	Pattern 60
17	Dynamic pattern	0-9	No function
		10-11	Dynamic pattern 1
		12-13	Dynamic pattern 2

CH	Function	DMX Value	Description
	(2 numbers 1 pattern)
		194-195	Dynamic pattern 93
		196-255	Dynamic pattern 94
18	Pattern movement (with 17CH)	0-255	Select a dynamic pattern scene
19	Dynamic pattern speed (with 17CH)	0-9	No function
		10-132	Clockwise, from fast to slow
		133-255	Counterclockwise, from slow to fast
20	Background R	0-255	From dark to bright
21	Background G	0-255	From dark to bright
22	Background B	0-255	From dark to bright
23	Background W	0-255	From dark to bright
24	Dimming Mode	0 - 49	Mode -1
		50 - 99	Mode -2
		100-149	Mode -3
		150-255	Mode -4
25	Reset	0-250	No function
		251-255	Reset within 5s

► 33CH Mode

CH	Function	DMX Value	Description
1	Pan	0 - 255	Pan control
2	Pan adjustment	0 - 255	Pan adjustment control
3	Tilt	0 - 255	Pan control
4	Tilt adjustment	0 - 255	Tilt adjustment control
5	Pan/Tilt speed	0 - 255	Speed from fast to slow
6	Tilt infinite control	0-55	No function
		56-155	Infinite rotation clockwise from slow to fast
		156-255	Infinite rotation counterclockwise from slow to fast
7	Zoom	0-255	From narrow to wide
8	Dimmer	0 - 255	From dark to bright
9	Dimmer adjust	0 - 255	Dimmer adjustment
10	Strobe	0-3	No function
		4-203	Synchronous strobe speed from slow to fast (1Hz-25Hz)
		204-255	Random strobe
11	R	0-255	Red dimming
12	Red adjust	0-255	Red adjust
13	G	0-255	Green dimming
14	Green adjust	0-255	Green adjust

CH	Function	DMX Value	Description
15	B	0-255	Blue dimming
16	Blue adjust	0-255	Blue adjust
17	W	0-255	White dimming
18	White adjust	0-255	White adjust
19	Dimming Mode	0 - 49	Mode -1
		50 - 99	Mode -2
		100-149	Mode -3
		150-255	Mode -4
20	Linear color temperature	0-4	No function
		5-255	Color temperature from warm to cold
21	Macro color	0-9	No function
		10-19	Macro color 1
		20-29	Macro color 2
	(10 numbers 1 macro color)
		240-249	Macro color 24
		250-255	Macro color 25
22	Static pattern	0-2	No function
		3-5	pattern 1
		6-9	pattern 2

CH	Function	DMX Value	Description
	 (3 numbers and one type)
		174-176	pattern 59
		177-255	Pattern 60
23	Dynamic pattern	0-9	No function
		10-11	Dynamic pattern 1
		12-13	Dynamic pattern 2
	 (2 numbers and one type)
		194-195	Dynamic pattern 93
		196-255	Dynamic pattern 94
24	Pattern movement (with 23CH)	0-255	Select a dynamic pattern scene
25	Dynamic pattern speed (with 23CH)	0-9	No function
		10-132	Clockwise, from fast to slow
		133-255	Counterclockwise, from slow to fast
26	Pattern fade	0-255	Pattern fade
27	Background dimmer	0-255	Background 0-100% dimming
28	Background strobe	0-255	Background strobe
29	Pattern background R	0-255	Pattern background Red
30	Pattern background G	0-255	Pattern background Green
31	Pattern background B	0-255	Pattern background Blue

CH	Function	DMX Value	Description
32	Pattern background W	0-255	Pattern background White
33	Reset	0-250	No function
		251-255	Reset within 5s

► 229CH Mode

CH	Function	DMX Value	Description
1	Pan	0-255	Pan adjustment
2	Pan adjustment	0-255	Pan fine adjustment
3	Tilt	0-255	Tilt adjustment
4	Tilt adjustment	0-255	Tilt fine adjustment
5	Pan/Tilt speed	0-255	From fast to slow
6	Tilt infinite control	0-55	No function
		56-155	Infinite rotation clockwise from slow to fast
		156-255	Infinite rotation counterclockwise from slow to fast

CH	Function	DMX Value	Description
7	Zoom	0-255	From narrow to wide
8	Dimmer	0-255	From dark to bright
9	Dimmer adjust	0-255	Dimmer adjusting control
10	Strobe	0-3	No function
		4-203	Synchronous strobe speed from slow to fast (1Hz-25Hz)
		204-255	Random strobe
11	R	0-255	Red dimming
12	Red adjust	0-255	Red adjust
13	G	0-255	Green dimming
14	Green adjust	0-255	Green adjust
15	B	0-255	Blue dimming
16	Blue adjust	0-255	Blue adjust
17	W	0-255	White dimming
18	White adjust	0-255	White adjust
19	Dimming Mode	0 - 49	Mode -1
		50 - 99	Mode -2
		100-149	Mode -3
		150-255	Mode -4
20	linear color temperature	0-4	No function

CH	Function	DMX Value	Description
		5-255	Color temperature from warm to cold
21	Macro color	0-9	No function
		10-19	Macro color 1
		20-29	Macro color 2
	(10 numbers 1 macro color)
		240-249	Macro color 24
		250-255	Macro color 25
22	Static pattern	0-2	No function
		3-5	pattern 1
		6-9	pattern 2
	 (3 numbers and one type)
		174-176	pattern 59
		177-255	Pattern 60
23	Dynamic pattern	0-9	No function
		10-11	Dynamic pattern 1
		12-13	Dynamic pattern 2
	 (2 numbers and one type)
		194-195	Dynamic pattern 93
		196-255	Dynamic pattern 94

CH	Function	DMX Value	Description
24	Pattern movement (with 23CH)	0-255	Select a dynamic pattern scene
25	Dynamic pattern effect speed (with 23CH)	0-9	No function
		10-132	Clockwise, from fast to slow
		133-255	Counterclockwise, from slow to fast
26	Pattern fade	0-255	Pattern fade
27	Background dimmer	0-255	Background 0-100% dimming
28	Background strobe	0-255	Background strobe
29	Pattern background R	0-255	Pattern background Red
30	Pattern background G	0-255	Pattern background Green
31	Pattern background B	0-255	Pattern background Blue
32	Pattern background W	0-255	Pattern background White
33	Reset	0-250	No function
		251-255	Reset within 5s
34	R1 LED dimmer	0-255	R1 LED dimming
35	G1 LED dimmer	0-255	G1 LED dimming
36	B1 LED dimmer	0-255	B1 LED dimming
37	W1 LED dimmer	0-255	W1 LED dimming
.....
226	R49 LED dimmer	0-255	R49 LED dimming

CH	Function	DMX Value	Description
227	G49 LED dimmer	0-255	G49 LED dimming
228	B49 LED dimmer	0-255	B49 LED dimming
229	W49 LED dimmer	0-255	W49 LED dimming

► **206CH Mode (ArtNet Mode, 1~10 channels are controlled by DMX512, 11~206 channels are controlled by ArtNet)**

CH	Function	DMX Value	Description
1	Pan	0-255	Pan adjustment
2	Pan adjustment	0-255	Pan fine adjustment
3	Tilt	0-255	Tilt adjustment
4	Tilt adjustment	0-255	Tilt fine adjustment
5	Pan/Tilt speed	0-255	From fast to slow
6	Tilt infinite control	0-55	No function
		56-155	Infinite rotation clockwise from slow to fast
		156-255	Infinite rotation counterclockwise from slow to fast
7	Zoom	0-255	From narrow to wide
8	Reset	0-250	No function
		251-255	Reset within 5s
9	Dimmer	0-255	From dark to bright
10	Strobe	0-3	No function

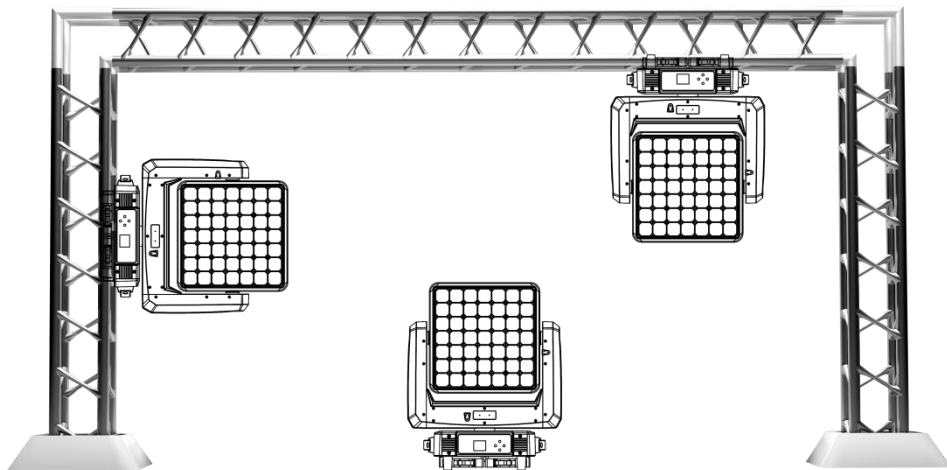
CH	Function	DMX Value	Description
		4-203	Synchronous strobe speed from slow to fast (1Hz-25Hz)
		204-255	Random strobe
11	R1 LED dimmer	0-255	R1 LED dimming
12	G1 LED dimmer	0-255	G1 LED dimming
13	B1 LED dimmer	0-255	B1 LED dimming
14	W1 LED dimmer	0-255	W1 LED dimming
.....
203	R49 LED dimmer	0-255	R49 LED dimming
204	G49 LED dimmer	0-255	G49 LED dimming
205	B49 LED dimmer	0-255	B49 LED dimming
206	W49 LED dimmer	0-255	W49 LED dimming

8. Mounting

When installing the unit, the trussing or area of installation must be able to hold 10 times the weight without any deformation. When installing the unit must be secured with a secondary safety attachment, e.g. an appropriate safety cable. Never stand directly under the facility while mounting, uninstalling or repairing facilities.

High-altitude mounting requires for extensive experience, including working load limits calculating , installation material, and periodic safety check of

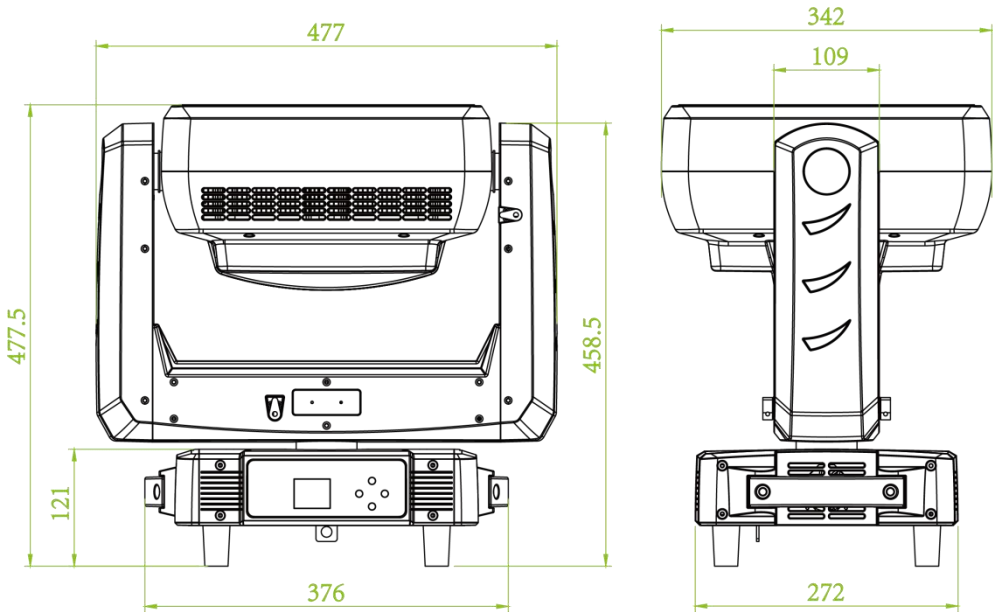
installation materials and facilities. If you're lack of mentioned qualifications, do not attempt the installation yourself. These installation should be checked by a skilled person annually.



4920Z works properly in above different mounting, hanging upside-down from a ceiling, sideways on trussing, or set on smooth horizontal surface. Be sure this facility is at least 12m (40ft) away from flammable materials (decoration etc.). Always use and install the safety cable to prevent accidental damage or injury from the facility failure. Never use handles for secondary attachment.

NOTICE: The suitable environment temperature of the facility is from -25° C to 45° C. Do not place this facility in an environment where the temperatures are under or above the temperatures stated. This will help the fixture run at its best and extend the lifetime.

9. Product Size



10. Attention

1. When the facility is powered on, please avoid looking directly at the facility.
2. When assembling/ replacing LED, be sure to cut off the main power of facilities before opening the cover upon the LED board.

11. Trouble Shooting

Following are a few common problems that may occur during operation. Here are some suggestions for easy troubleshooting:

A. The unit does not work, no light and the fan does not work

1. Check the status of power connection and fuse.
2. Check the voltage.
3. Check the power indicator.

B. No response to DMX controller

1. If the display screen flashes, check the DMX signal connector and signal line whether the connection is correct.
1. If the display screen does not flash, but no response to channel control, check whether the address code or channel setting is correct.
1. If the DMX signal transmission is intermittent, check if the XLR and DMX cables are in good condition.
2. Try using another controller.
3. Check if the DMX cables is too close to the high-voltage wire, which may damage or interfere with the signal circuit.
6. The facility has not completed the self-check.

C. One of the channels is not working well

1. The stepper motor might be damaged or the cable connected to the PCB is broken.
2. The motor's drive IC on the PCB might be out of condition.

12. Fixture Cleaning

The lens and diffuser should be clean frequently to get better light effect. Wipe frequency according to the environment. Humidity, excessive smoke, and dirty environment will make lens dusty.

- Use soft cloth and special glass cleaner.
- Wipe lens surface at least every 30 days.
- Use vacuum cleaners or air guns to clean the interior structure of the facility, at least twice a year.



Warning:

To avoid the danger of lighting strikes and fire, please do not place the facility in a humid environment. Do not disassemble it without permission, otherwise, the manufacturer will not provide warranty. If the facility fails, please contact the manufacturer first.

Product Warranty Card

Product: 49x20W Matrix Zoom Wash

Model NO.: 4920Z

Manufacture Date:

User:

Purchase Date:

Manufacturer:

Sales Store:

Address:

ATTN.:

ATTN.:

Phone:

Phone:

Note: The above blank must be filled in and sealed by the end user or sales point, otherwise no warranty will be provided. (Below please check the warranty period and terms)

Warranty Period: This facility is warranted for 2 years from the date of purchase.

Warranty Terms:

1. Except for man-made damage and natural disasters
2. If the facility fails to function properly during the warranty period, please contact our after service department or our local distributor directly.
 - 1) Fail to present a valid warranty card.
 - 2) Omissions, alterations, and trade sales names on the warranty card.
 - 3) Failures and damage caused by force majeure.
 - 4) Failures and damage caused during transportation and handling.
 - 5) Failures and damage caused by failure to follow the instructions for use.
 - 6) Failures and damage caused by disassembly, repair, and modification of the product without the manufacturer's authorization or by non-professionals.
 - 7) Failures caused by the use of accessories not approved by the factory or not matched by the factory.

▲ Thank you for reading this manual. Please keep it for future reference.