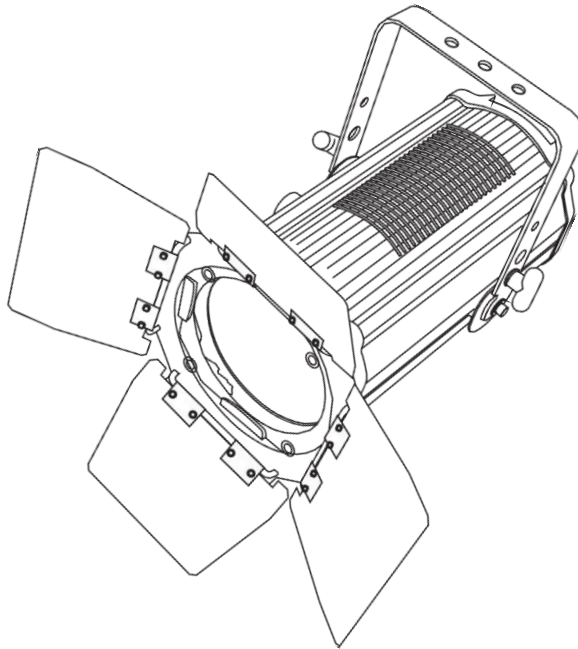


BY-P11 LED Fresnel Light

300W CW Or WW LED Fresnel Light **(Auto zoom 15-50°)**



User manual

Please read the instructions carefully before use

TABLE OF CONTENTS

1. Technical Specifications	3-4
2. Description	4
3. Unpacking	5-6
4. Menu.....	6-9
5. DMX Channels.....	9-10
6. Photographic Charts.....	10-11
7. LUX Date.....	11
8. Size.....	12
9. Fixture Cleaning	13
10.Warning	13

Statement

It is a powerful LED Fresnel which using a 300W LED COB. A massive zoom range of 15° to 50° and a beautifully soft, warm white or cool white wash with high CRI make it an ideal LED replacement for aging incandescent Fresnels.

You can have it with manual zoom or motorized zoom is easily accessed

by DMX512 controller. Enjoy the benefits of LED lighting without being held back by previous investments made in major dimming systems!

1. Technical Specifications

Light Source:

LED POWER: 300W

Cool White 5600K or Warm White 3200K (300W) COB LED

Led Lamp: Imported LED

Color Rendering Index(CRI): Ra≥90

LED Life Time: over 50,000 hours

Power supply:

Voltage: AC100-240V

Max.power: 300W

Optics:

Zooming Scale: 15-50°

DMX auto zoom optional

Soft and even field of light

Features:

House Material: Aluminum Alloy

House Color: Black

Strobe :1-25times/sec

Control:

Control Protocol: DMX

Control System: DMX, Auto run and Master/Slave

DMX auto zoom: 2/5 CH

Manual zoom: 1/3CH

Working Environment :

Environment Temperature: -30°C~40°C

Cooling system : No noise fan of Pccooler

IP Grade: IP20

Package :

Dimensions: 397(D)*211(W)*378(H)mm

Net weight: 8.5kgs

Gross weight: 11kgs

Packing Size: 58x32.5x32cm (1pc/carton)

2. Descriptions

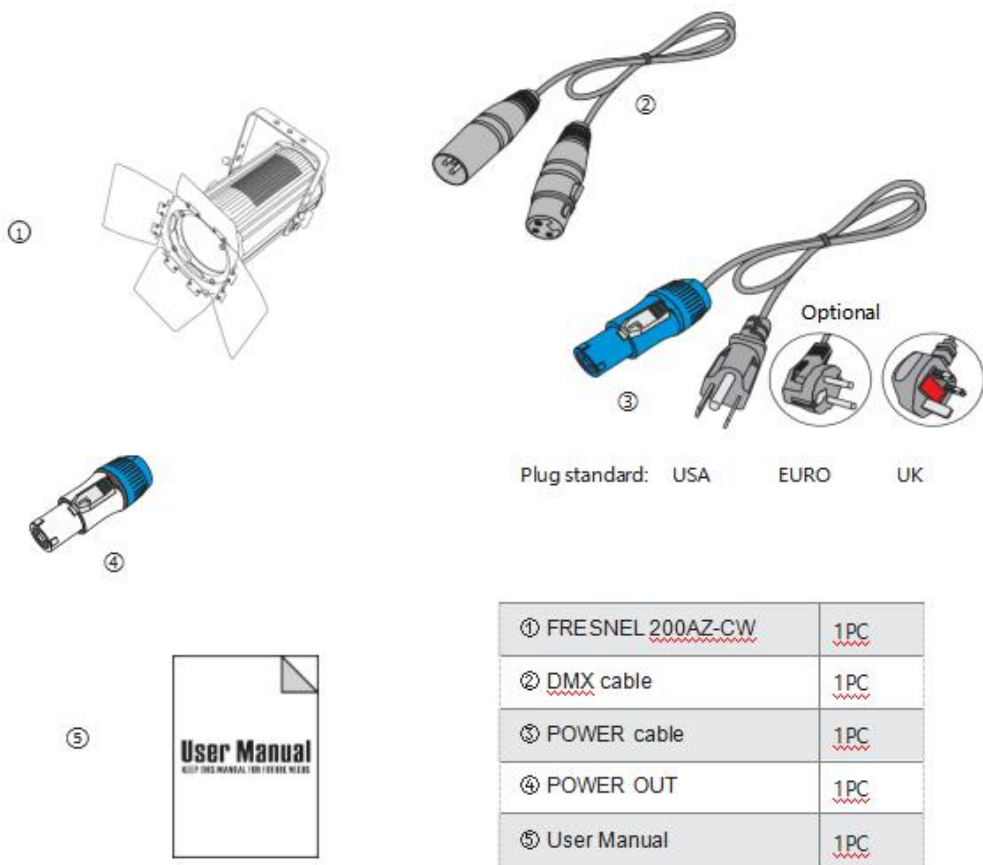
- Works perfectly on conventional dimmers or constant power with DMX
- Motorized zoom angle between 15° to 50°, via DMX
- Ultra smooth 16-bit dimming of master dimmer
- Soft and even field of light
- Simple and complex DMX channel profiles for programming versatility
- Warm white and cool white Fresnel-style lighting fixture
- Virtually silent operation for use in studio and theatre applications

3. Unpacking

Thank you for choosing our P11. For your own safety, please read this manual before installing the device. This manual covers the important information on installation and applications. Please install and operate the fixture with following instructions. Meanwhile, please keep this manual well for future needs.

The P11 is made of a new type of high temperature strength of cast aluminum casing with nice outlook. The fixture is designed and manufactured strictly following CE&RoHS standards, complying with international standard DMX512 protocol. It's available independently controlled and linkable with each other for operation. And it is applicable for large-scale live performances, theater, studio, nightclubs and discos.

The P11 adopts 1PCS 300W COB LED (available for CW Or WW) which features high brightness and stability. Please carefully unpack it when you receive the fixture and check whether it is damaged during the transportation. And please check whether the following items are included inside the box:



4. Menu Operations

Menu Data

Menu		State
		Operative Mode
		DMX address
		DMX channel Mode

Main Menu	Vice Menu	Speed of Dimmer
		No DMX signal
		Screen Savers
		Screen Rotation
		Language switching
		Speed of Dimmer
		Manual mode
		System information
		Reset
		Restore the default settings

Key Operation

Vice Menu		State
Operative Mode	DMX	Master/Slave Mode: Receive DMX signal from control console or host
DMX address	1~512	Press “ENTER” to edit state. Adjust ID address by the Key of Up/Down. Press “ENTER” to ensure again
DMX channel mode	5CH	5 DMX Default channel
	2CH	
No DMX signal	maintain	Running by Original state
	Clear	Stop running
Screen Savers	Turn off	Backlight always on
	blank screen	Backlight turn off after idle 10 seconds
	DMX address	ID address displayed after idle 10 seconds
Screen Rotation		Press“ENTER”twice, 180°flip screen display

Language switching		Press "ENTER" twice, switch between Chinese and English
Speed Dimmer	Turn off	Close without delay, fast on/off
	Dimmer 1	4 linear dimmer pattern: 1~4 (the fastest and slowest)
	Dimmer 2	
	Dimmer 3	
	Dimmer 4	
Manual mode		Press "ENTER" to Manual mode, Not receive control signals
System information		Press "ENTER" to ensure , View the version number and the elapsed time
Reset	Ensure/Cancel	Press "ENTER" to confirmation dialog box, then press "ENTER" again to reset motor. Press "Cancel" to exit the dialog box.
Restore the default settings	Ensure/Cancel	Press "ENTER" to confirmation dialog box, then press "ENTER" again to restore the default settings. Press "Cancel" to exit the dialog box.

Language switching

Option	State
English/ Chinese	Pressed twice in a row "ENTER" button, switch in English/Chinese

Screen Rotation

Option	State
180°flip screen display	Pressed twice in a row "ENTER" button, 180°flip screen display

System information

Option	State
Software Version	Displays the current version number of the software

NO. (Ver)	
Using of time	Displays the total using time information
Total using time	Displays the time using of this

Manual mode

Option	State	
Dimmer	0~255	Press"ENTER"to edit. Change value by press UP/DOWN, press "ENTER" to ensure .
Speed of dimmer		
Strobe		
zoom		
Speed of zoom		

Special Instructions

At the main menu, press "ENTER" to get in to Reset Calibration Interface, to micro debugging Gobo location. (Hide feature)

State	Operation
Focus Calibration	Press"ENTER"to edit, Calibration values can be set by the Key of UP/DOWN. Press "ENTER" to ensure .

5.DMX Channels

5 CH Mode (Standard channel model)

Channel	Data	Function	Mark
1	0~255	dimmer	0-255 linear dimmer
2		speed of dimmer	
	0~9	speed of dimmer 2	Default
	10~29	Turn off speed of dimmer	speed of dimmer 4 (the slowest and softest)
	30~69	speed of dimmer 1	

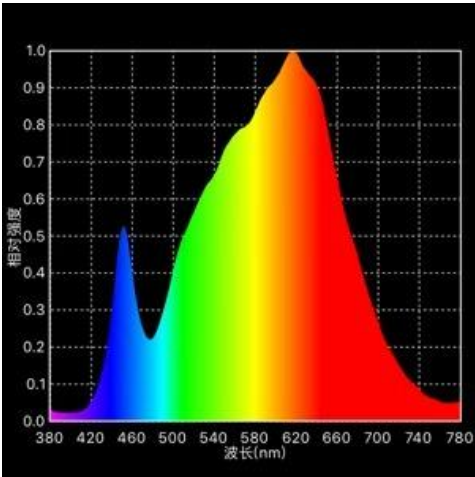
	70~129	speed of dimmer 2	
	130~189	speed of dimmer 3	
	190~255	speed of dimmer 4	
3	0~10		no strobe
	11~255		the speed of strobe (255 is the fastest)
4	0-255		focus
5	0-255		Speed of focus (0 is the fastest)

2 CH Mode (Basic channel model)

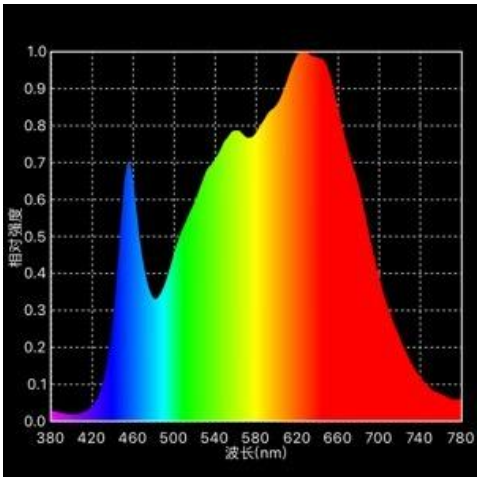
channel	data	Function	Mark
1	0~255	Dimmer	0-255 linear dimmer
2	0~255		focus

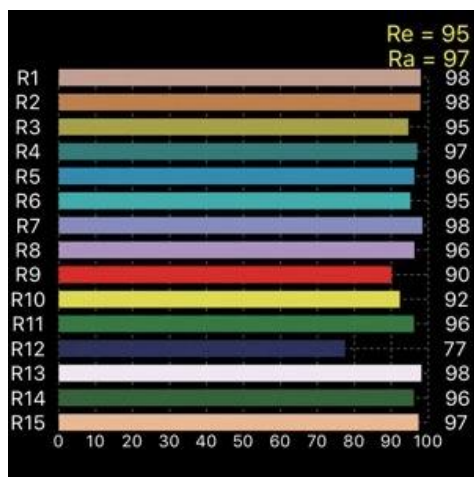
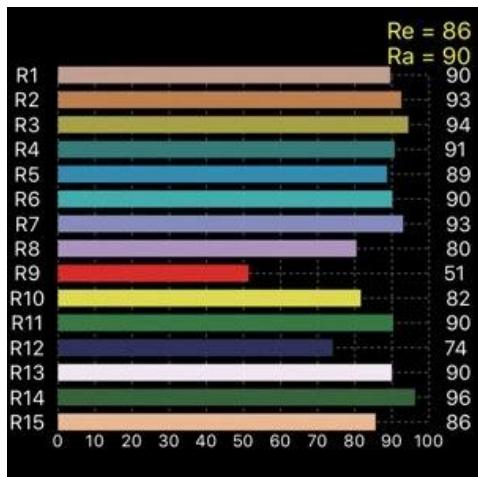
6.Photographic Chart(Spectrogram & CRI)

Ra≥90

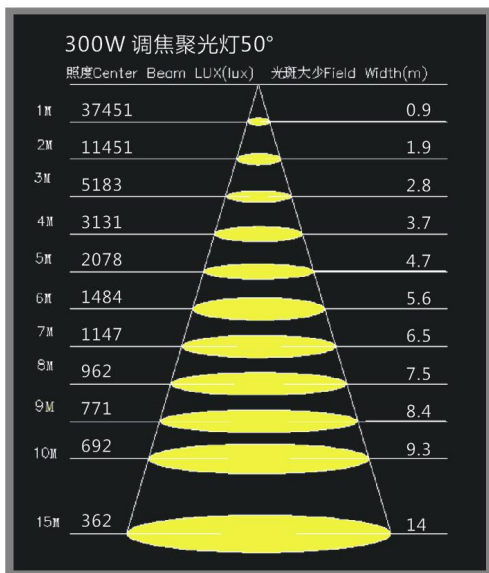
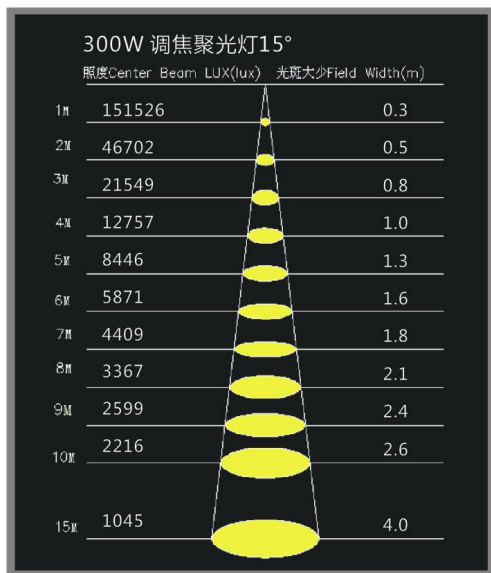


Ra≥95



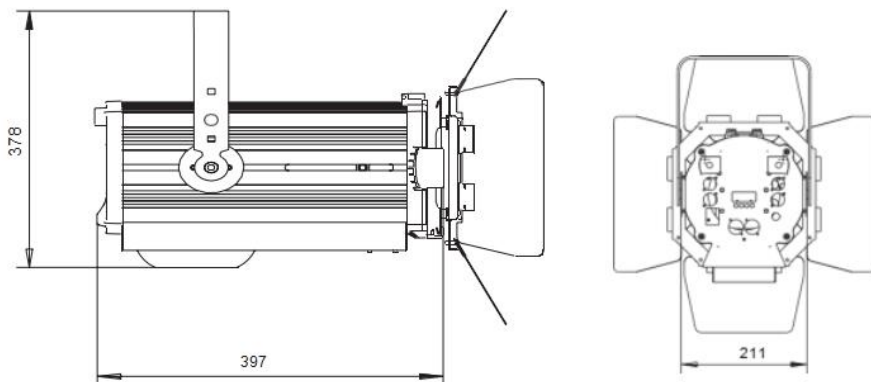


7. LUX Date



8. Size

Size of the fixture: 379(D)*211(W)*378(H)mm



Imported Led



Digital button screen



No noise fans



Convenient manual button



9. Fixture Cleaning

Before disconnecting the lighter or starting maintenance work, ensure that the power supply of the light is turned off to maintain the maximum brightness output of the light, and it can also prolong its service life. It is recommended to use high-quality professional glass cleaner and to clean it with cloth. Alcohol or chemical solvents are not allowed under any circumstances. The interior of the lamp is vacuum-cleaned at least once a year.

10.Warning

Do not disassemble or modify light fixtures

Do not expose the fixture to water or any other kind of liquids and metals

Do not install the lamp in a hot environment

Do not shoot the light beam on flammable materials. The distance between the light fixture and flammable material should be at least 2 meters.

The distance between the lamp and the surface of the adjacent object should be at least 0.5 meters.

Do not look directly at the beam of the follower lamp, as it may cause eye damage

Before opening the chasing light product or want to repair work, please make sure that the power is off